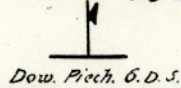


12 DYW. PIECH.

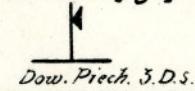


Zandarmerja liczy na etaf sero. zap. 6 dyonu Zand. W.
 Pocz. pol. N: 32.
 Sekcja Tab. liczy na etaf D^{na} Tab. 12. D.P.
 Plut. jazdy liczy na etaf 4p. Drag. Kres.
 Komp. str. liczy na etaf 52 p.p. (10 p. S.)

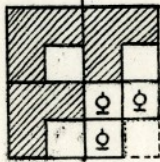
23. Bryg. piech.



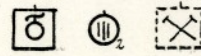
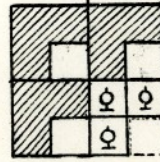
24. Bryg. piech.



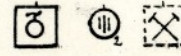
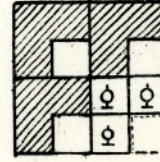
52. P.P.



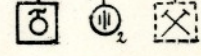
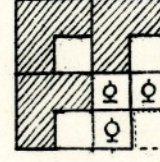
53. P.P.



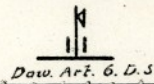
54. P.P.



51. P.P.



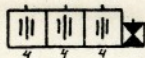
12. Br. art.



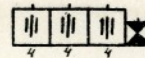
12. P.A.P.



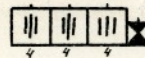
I/12.p.a.p.



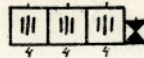
II/12.p.a.p.



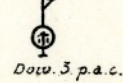
III/12.p.a.p.



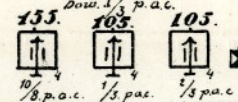
IV/12.p.a.p.



12. P.A.C.



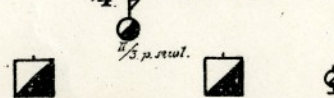
I/12.p.a.c.



II/12.p.a.c.

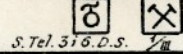


IV/4. P. Drag. Kres.

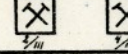


12 Baon. Sap.

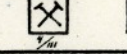
12. k. lej. d. 1/4



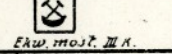
2/XII



Dow. mi. 6. D.S. 4/XII



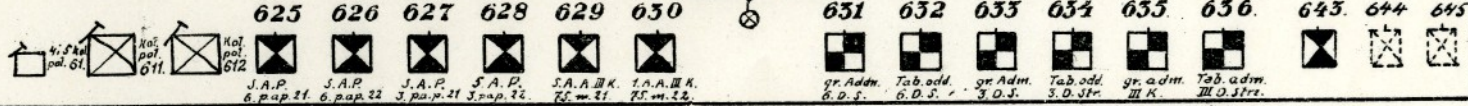
Kol. Most. 65.



S. Tel. 316. D.S. 2/III

Ekw. most. III K.

Tabor J2 D.P.



Szpił. NRA:

607



608



609



64 Kol. Sam. Sanit.

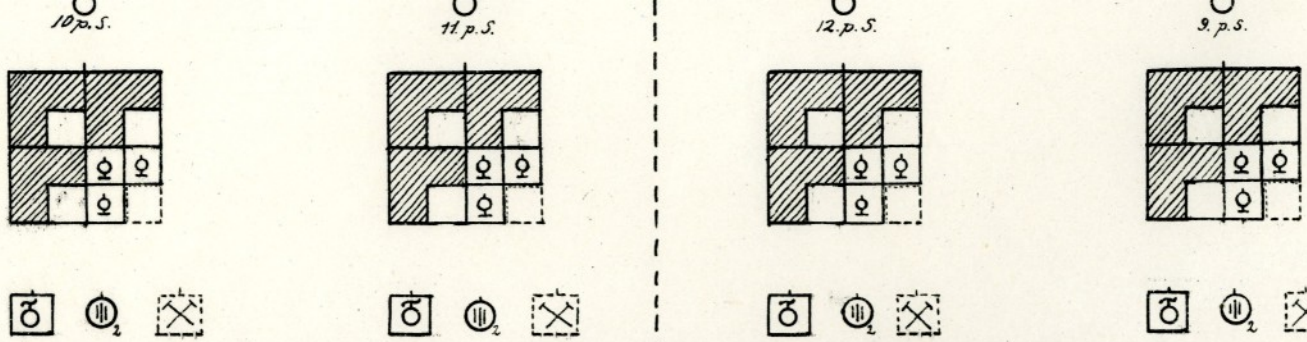


Kom. Abm. III K. Amb. III K. 103. Med. i Chir.
Kol. sam. 6. D.S. 15 K.

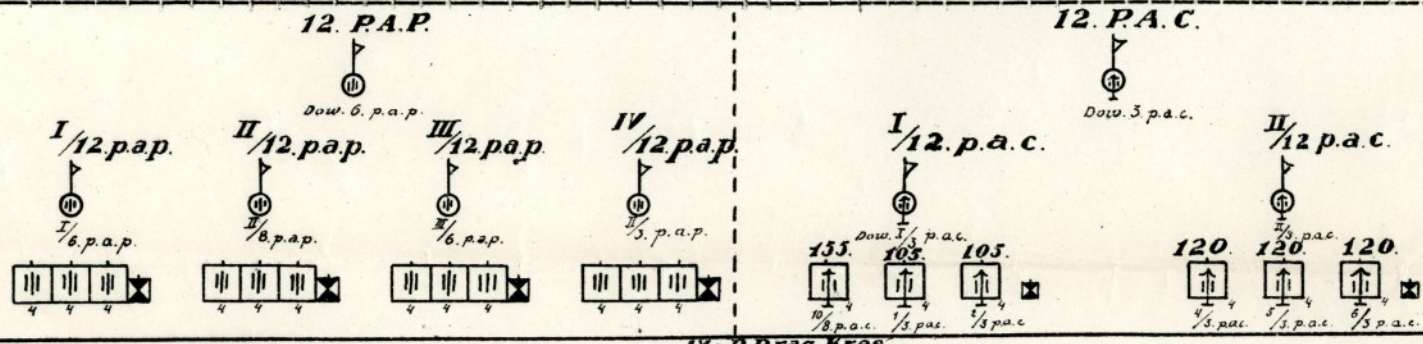
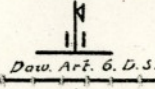
Kol. sam. sam. 7. D.S.

Kol. Narz. 12.

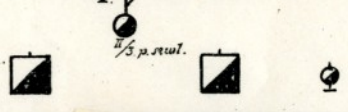




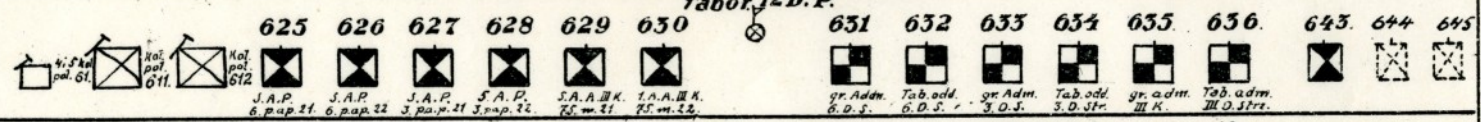
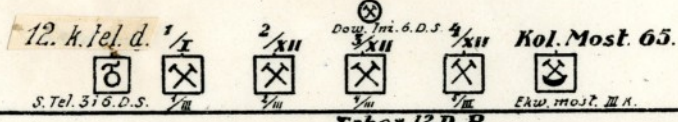
12. Br art.



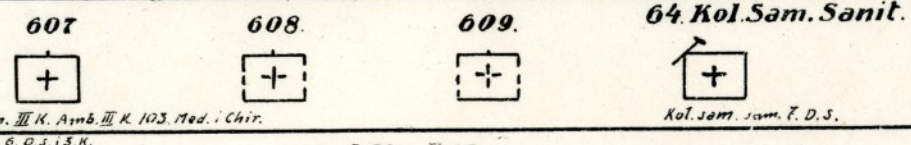
IV. P. Drag. Kres.



12 Baon Sap.



Szpil. NRA:



Kol. Narz. 12.



12. Urząd Am. **12 Warszt. Art.**



12. Urząd Gospodarczy



12 Szpital koni

